

RECEIVED
CITY OF REDMOND
DEC 07 2015
HEARING EXAMINER
EX. 5 FILE # _____



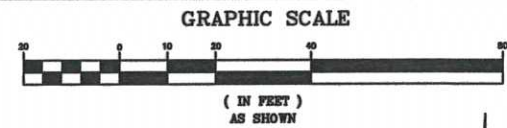
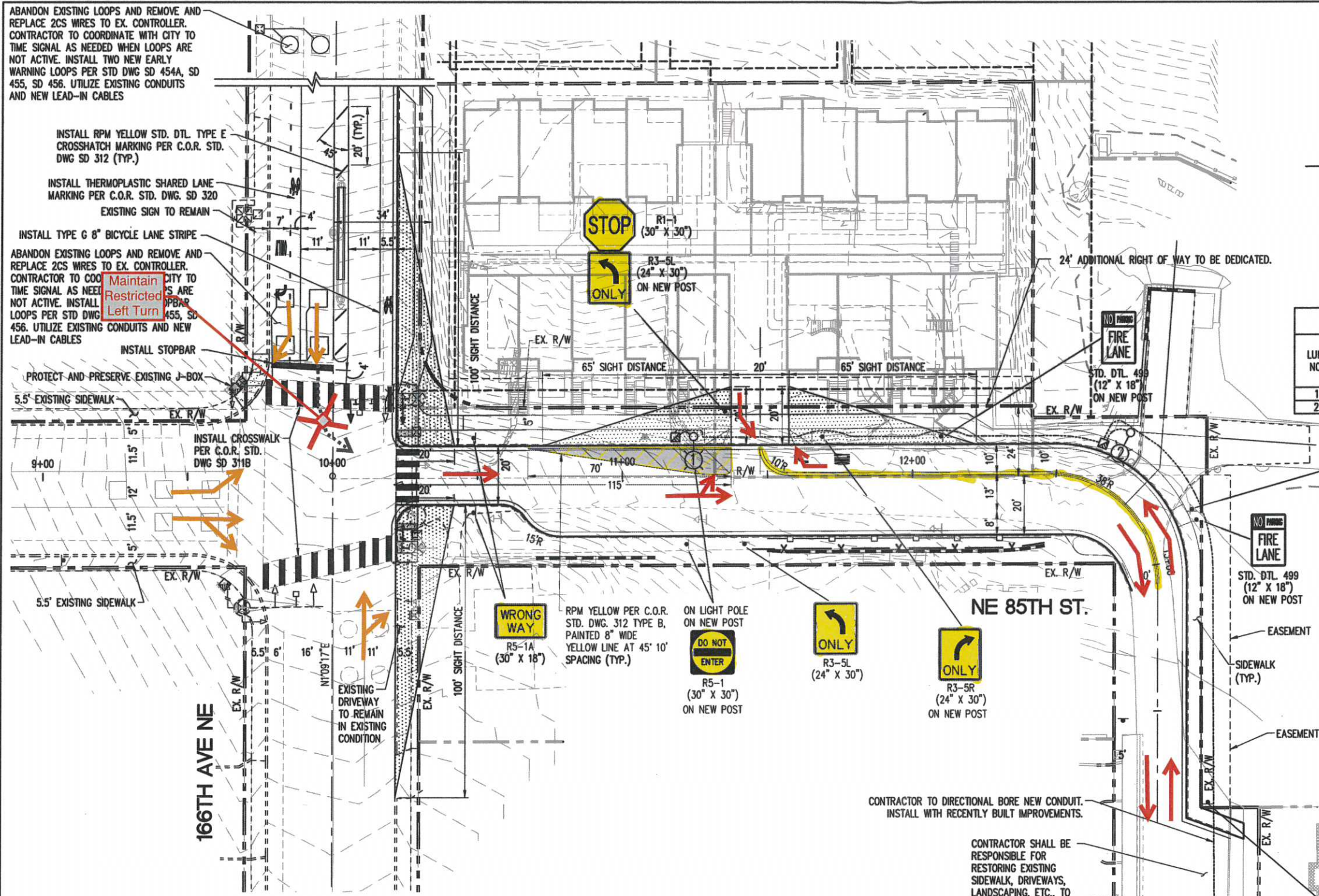
Looking West on 83rd at 166th Intersection



Looking South on 166th at 85th Intersection



Looking West on 85th at 166th Intersection



THIS DEVELOPMENT SHALL BE CONSTRUCTED IN ACCORDANCE WITH CITY OF REDMOND STANDARD SPECIFICATIONS AND DETAILS LATEST EDITION.

ILLUMINATION LEGEND

- LIGHT STANDARD (LUMINAIRE POLES SHALL BE CONCRETE OCTAGONAL PER C.O.R. STD DRW 430)
 - TYPE 1 JUNCTION BOX PER C.O.R. STD DWG 467A
 - 2" # SCH. 40 PVC CONDUIT WITH 2-#8, 1-GROUND. INSTALL SCH. 80 AT ROAD/DRIVEWAY CROSSINGS.
- ALL STREET LIGHTS SHALL BE OWNED AND MAINTAINED BY PSE. CONTRACTOR SHALL COORDINATE INSTALLATION REQUIREMENTS WITH PSE AND INCLUDE ALL ASSOCIATED ILLUMINATION COSTS IN BASE BID.

LIGHTING SCHEDULE

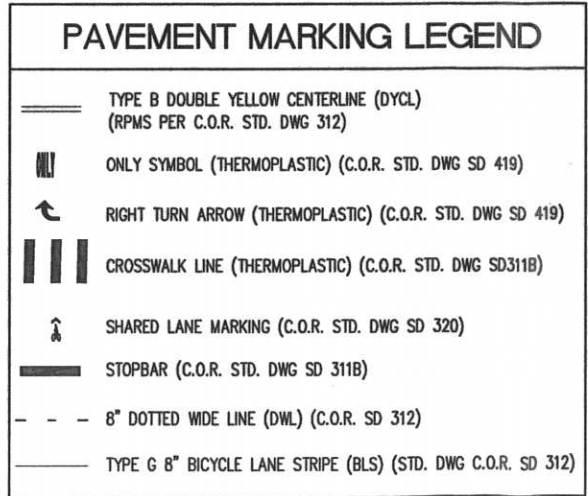
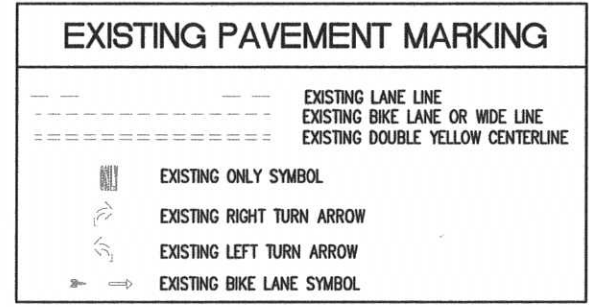
LUM. NO.	TYPE DISTRIBUTION	MAST ARM LENGTH	MTG. HT. (H1)	STATION, OFFSET
1	TYPE II DISTRIBUTION	6	25	11+25 13' LT.
2	TYPE III DISTRIBUTION	6	25	12+66, 21' LT.



NOTES

- NEW SIGN POSTS AND FOUNDATIONS SHALL BE PER CITY OF REDMOND STANDARD DRAWINGS 426C AND 428D.
- THE CONTRACTOR IS RESPONSIBLE FOR INSTALLING ALL SIGNS AND CHANNELIZATION PER CITY OF REDMOND STANDARDS. CONTRACTOR SHALL LAY OUT ALL SIGNS AND CHANNELIZATION, AND THEN CONTACT ALLYSON THOMPSON, SENIOR TRANSPORTATION TECHNICIAN, AT (425) 556-2752 48 HOURS IN ADVANCE OF INSTALLATION TO VERIFY LAYOUT.
- ALL NECESSARY SIGNS AND MARKINGS ON-SITE, ALONG PROPERTY FRONTAGE, AND AT SPECIFICALLY DESIGNATED OFF-SITE LOCATIONS SHALL BE PROVIDED BY THE APPLICANT AS REQUIRED BY THE TRANSPORTATION DIVISION WHETHER OR NOT THESE ARE INDICATED ON THE CONSTRUCTION DRAWINGS.

NOTE: DIRECT ACCESS TO 166TH AVENUE FROM 85TH STREET IS NOT PERMITTED.



APPROVED FOR CONSTRUCTION

FOR: WILLIAM J CAMPBELL
DIRECTOR OF PUBLIC WORKS
CITY OF REDMOND

PLAN CHECK ENGR. _____
STORM DRAIN ENGR. _____
UTILITY ENGR. _____
FIRE DEPT. _____
TRANSPORTATION ENGR. _____
PLANNING DEPT. _____

THIS APPROVAL IS FOR THE DESIGN CONCEPT ONLY. THESE PLANS APPEAR TO BE IN CONFORMANCE WITH THE CITY OF REDMOND DESIGN STANDARDS FOR CONSTRUCTION. THIS APPROVAL SHALL NOT BE CONSTRUED AS AUTHORIZING CONSTRUCTION NOT IN ACCORDANCE WITH APPLICABLE CITY STANDARDS. THE CITY RESERVES THE RIGHT TO REQUIRE REVISIONS TO THE APPROVED PLANS TO ASSURE CONFORMANCE WITH CITY OF REDMOND DESIGN STANDARDS FOR CONSTRUCTION AT ANY TIME THAT IT IS DISCOVERED THAT THE PROPOSED CONSTRUCTION DOES NOT OTHERWISE MEET THE APPLICABLE CONSTRUCTION STANDARDS. THE OWNER IS REQUIRED TO PROVIDE DESIGNS AND PLANS IN ACCORDANCE WITH APPLICABLE CITY STANDARDS AND ASSURES THAT CONSTRUCTION IS ACCOMPLISHED WITH THOSE STANDARDS. THE OWNER AND/OR DESIGN ENGINEER AND/OR DEVELOPER, MAY BE REQUIRED TO MAKE NECESSARY APPROVED FIELD REVISIONS TO CORRECT ANY ERRORS OR OMISSIONS FOUND ON THE APPROVED PLAN.

No.	Date	By	Revision Description
REVISION 30%	3/17/15		
REVISION 60%	6/11/15		
REVISION 90%	6/25/15		
FINAL REVISION COMMENTS	8/20/15		
FINAL REVISION COMMENTS	10/30/15		

Issue Date: 8/18/2015
Final Submittal
Project No: 30458001

PACILAND
T (360) 786-9500
F (360) 786-5767
www.Paciland.com

166TH AVE. TOWNHOMES
166TH AVE NE & NE 85TH ST
REDMOND, WA

ROADWAY STRIPING
AND SIGNING PLAN

CH-40

Existing Traffic Patterns

